

TEEPA SNOW'S POSITIVE APPROACH® TO CARE



PAC Certified Independent Engagement Leader Manual

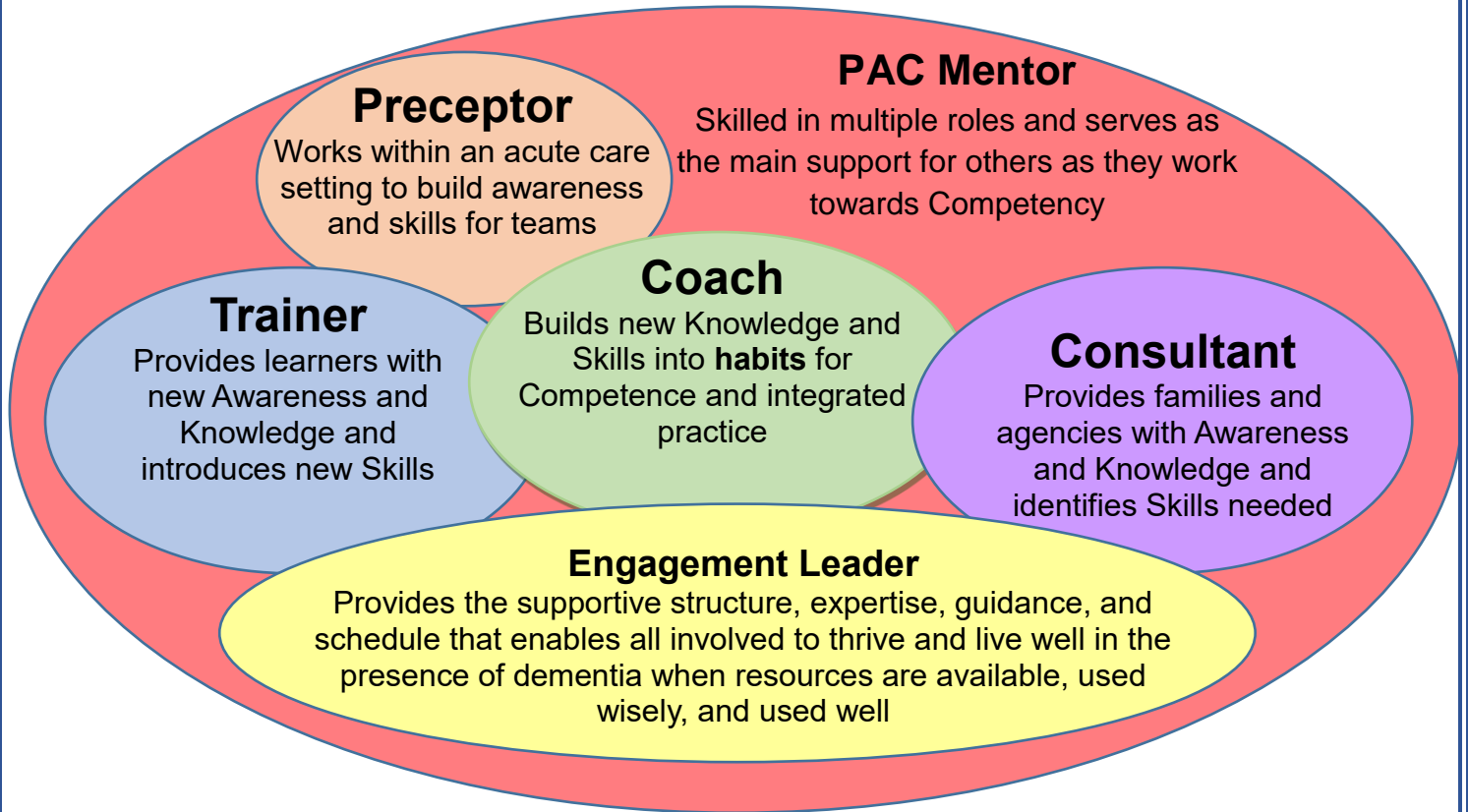
2019

Name: _____

Date: _____

PAC Certifications:

What are they and how do they relate?



Certified Individuals will move through the following levels within PAC:

Unaware – Novice/Aware – Proficient – Accomplished – Master

To help others move through the following levels in dementia care:

Awareness – Knowledge – Skill – Competence

**Positive Approach, GEMS, and Hand-under-Hand are registered trademarks of Positive Approach, LLC, registered in the United States. Positive Approach to Care, PAC, Positive Physical Approach, and PPA are trademarks of Positive Approach, LLC.

**Copyright © 2014-2019 Positive Approach, LLC and Teepa Snow. All rights reserved. This material may not be duplicated, reprinted or republished in any form and for any purpose except with the prior written permission of the copyright owner-
licensing@teepasnow.com

**The GEMS classification model and Positive Approach to Care techniques, strategies, and overall approach to care were created, developed and are copyrighted by Teepa Snow and Positive Approach, LLC.

Table of Contents:

PAC Philosophy	1
PAC Engagement Leader Resources	2
PAC Engagement Leader Certification Requirements	3
PAC Mentor and Peer Information	4
Notes Pages	9
Tab 1: Engagement Leader Certification Training Days	
PAC Engagement Leader Certification Agenda and Process	1
What is a PAC Engagement Leader?	7
Shape Drawing Activity	13
The Primitive Brain and Amygdalae States	14
Teepa's Six Building Blocks for Engagement	17
PAC 'Me Sheet' Information	22
PAC 'Picture Me' Information	30
Additional PAC Resources	47
Your First PAC Engagement Session	48
Reflection Guide	52
Tab 2: Skills Checklists	
Overview of PAC Skills	1
PAC Skills Checklists	6
Recognizing GEMS®	10
Giving Feedback in PAC Training	12
Tab 3: Tools to Use as a PAC Certified Independent Engagement Leader	
PAC Engagement Leader Building Blocks for Success	1
Teepa's Five Apologies	4
Living GEMS® Descriptions	8
Teepa's Six Pieces of the Puzzle	10
PAC Personality Traits	12
PAC Multiple Intelligences	14
PAC Cycles	16
GEMS® States Abilities	17
Amygdalae States	18
Tab 4: Supplemental Resources	
Teepa's PAC Songs	1
PAC Language Guide	4
PAC 'Me Sheet'	6
Creating Meaningful Engagement	11
PAC Exercises for Engagement	12
PVC Pipes Exercises	15
PAC Activity Boxes for All GEMS®	18
Tab 5: Course Evaluation	

PAC Philosophy:

The PAC philosophy is the foundation for the skills that you will provide and help build in others as a Certified PAC Engagement Leader.



PAC Mission:

Use our talents and abilities to develop awareness, spread knowledge, and teach skills to transform what exists into a more positive dementia care culture.

PAC Vision Statement:

Positive Approach® enhances the life and relationships of those living with brain change by fostering an inclusive, universal community.

We look forward to partnering with you on behalf of those living with dementia. In the meantime, if you have further questions regarding training logistics, please contact your PAC Mentor.

Thank you so much for your desire to learn and your commitment to making a positive difference!



Teepa and Team

PAC Engagement Resources:

PAC Engagement Leader Training: www.teepasnow.com

The training section of the PAC website may only be used by those currently enrolled or certified through PAC. Please protect your username and password and do not share with others.

Through the website, PAC Certified Engagement Leaders are able to:

- Review video content online
- Submit videos (under 20 minutes) for PAC Mentor review
- Obtain PowerPoint slides to help coach PPA™ and HuH®
- Find valuable information, with deeper knowledge, from Teepa and the PAC Team
- Get linked to our blog for Certified Learners and social media connections
- Complete the annual Recertification process

Positive Approach to Care Website and Store: www.teepasnow.com

The PAC website will be updated with your name and location upon becoming a PAC Certified Engagement Leader and will remain on the site as long as your Certification is maintained. We encourage you to utilize the website for additional resources and information and direct those you teach to the site for additional support.

This website also includes links to:

- Videos and modules of Teepa and the PAC Team
- Our online course series: *Becoming Dementia: Aware*
- Our monthly Online Dementia Journal, FREE!
- A monthly webinar series with Teepa and access to the recordings
- Additional courses or products that will enhance your own knowledge and skill
- Partners and Sponsors that PAC works with to create a more positive dementia-friendly community

Please check with your PAC Mentor to find out about new products and discounts.

If you have questions regarding the website, please email techadmin@teepasnow.com.

PAC Mentors:

Within each Certification course, you will be paired with a highly qualified PAC Mentor who will take you through the Certification process. If you prefer to be paired with a specific PAC Mentor, please let the Lead Mentor for the course know at the end of day one.

Next Steps: Earning Your Certification

The Independent Certified Positive Approach® to Care (PAC) Engagement Leader course is designed to provide you with knowledge and skill that will allow you to build Teepa Snow's PAC philosophy, knowledge and skill use in others. **This requires timely follow up on your part and completion of the steps below within 8 weeks of your classroom training.**

An Approved PAC Engagement Leader displays:

- Ability to grow personal skills and knowledge of Positive Physical Approach™ (PPA™), Positive Physical Connectors (PPC), Positive Action Starters (PAS), and Hand-under-Hand (HuH®) related to learners and those living with dementia
- Ability to adapt PPA™ to meet the needs of others
- Willingness to make mistakes, admit them, and learn from them
- Self-awareness as well as self-assurance
- Emotional intelligence
- Ability to recognize GEMS® states and willingness to assist at any level
- Ability to authentically apologize for situations in which someone perceives you to be at fault
- Equal commitment to process and product
- Agenda awareness and agenda flexibility
- Ability to find balance between encouragement and holding people accountable

In addition to the training curriculum and classroom training, you are required to complete the following steps to earn your PAC Engagement Leader Certification:

Four sessions with your PAC Mentor, focusing on:

- Getting to know you and your situation
- Determining your plan for demonstrating skill development
- Consulting with you on your planning for your one-on-one and group sessions
- Reviewing your PAC Skill videos and determining additional practice options
- Reviewing your one-on-one and group session
- Determining your status at completion and next steps in skill development
- Providing you with information about additional PAC Resources available to you after Certification

Video submissions with feedback sessions:

- PAC Skills of PPA™, PPC, PAS, and HuH® (30 sec-2 min)
- Completing a Personal Info Sheet (5 min of the interaction)
- Offering a one-on-one engagement opportunity to another person, based on their personal sheet (10-15 min)
- Offering a small group opportunity to 2-3 people (10-15 min)
 - People who are going to work with PLwD or
 - People who have agreed and signed off to be recorded

All Certification steps must be successfully completed within 8 weeks of classroom training in order to become a PAC Certified Independent Engagement Leader.

2019 PAC Mentors:

Lead Mentor Administrator: Alejandro DeJesus – alejandrod@teepasnow.com

Lead for the PAC Certified Community: Bonnie Tilley – bonniet@teepasnow.com

Abby Snow – abbys@teepasnow.com

Amanda Bulgarelli – amandab@teepasnow.com

Amanda Mullen – amandam@teepasnow.com

Beth Nolan – bethn@teepasnow.com

Beth Tesfay – betht@teepasnow.com

Bonnie Tilley – bonniet@teepasnow.com

Carolyn Lukert – carolynl@teepasnow.com

Charleen Phelps – charleenp@teepasnow.com

Cheryl Buchholtz – cherylb@teepasnow.com

Corrie Phillips – corriep@teepasnow.com

Dawn Wiggins – dawnw@teepasnow.com

Deanna Lueckenotte – deannal@teepasnow.com

Deirdre Thornton – deirdret@teepasnow.com

Dorothy Colby – dorothycolby@teepasnow.com

Greg Phelps – gregp@teepasnow.com

Janet Hart – janeth@teepasnow.com

Jessica Pelkey – jessicap@teepasnow.com

Kathleen Landel – kathleenl@teepasnow.com

Kathryn Quinlan – kathrynq@teepasnow.com

Kathy Tuckey – kathyt@teepasnow.com

Linn Possell – linnp@teepasnow.com

Liz Garant – lizg@teepasnow.com

Loy Campbell – loyc@teepasnow.com

Mary Donnelly – maryd@teepasnow.com

Melanie Bunn – melanieb@teepasnow.com

Rebekah Wilson – rebekahw@teepasnow.com

Sharon Jackson – sharonj@teepasnow.com

Teffie Landman – stephaniel@teepasnow.com

Not listed - _____

**please take a moment to sign up for Zoom video conferencing at zoom.us

After the Certification course, please contact your assigned Mentor with questions or concerns. If you do not hear back from your mentor within forty-eight hours, then please contact Alejandro DeJesus (alejandrod@teepasnow.com).

Your certification fee includes up to three hours of follow-up with your Mentor to complete your Certification process. The timeframe for you to complete your Certification is eight weeks after the Certification course. If you require an extension to twelve weeks, you will need to contact your assigned Mentor to request the extension.

****In the case that there needs to be an additional extension beyond twelve weeks, there will also be a required Mentor session fee of \$75/hour.**

PAC Peer Engagement Leaders:

It is great to connect with others from your course to team up or just offer support as you work to complete your certification. You will receive an email with the names, phone numbers, and email addresses of the other learners in your course. If you would prefer that any of your information not be shared, please notify one of the Mentors before completion of the course. Also, we will be posting the group photo from the course on our Facebook page.

Notes Pages:

Notes Pages:

Blank lined writing area with 25 horizontal lines.

Lined writing area with 25 horizontal lines.